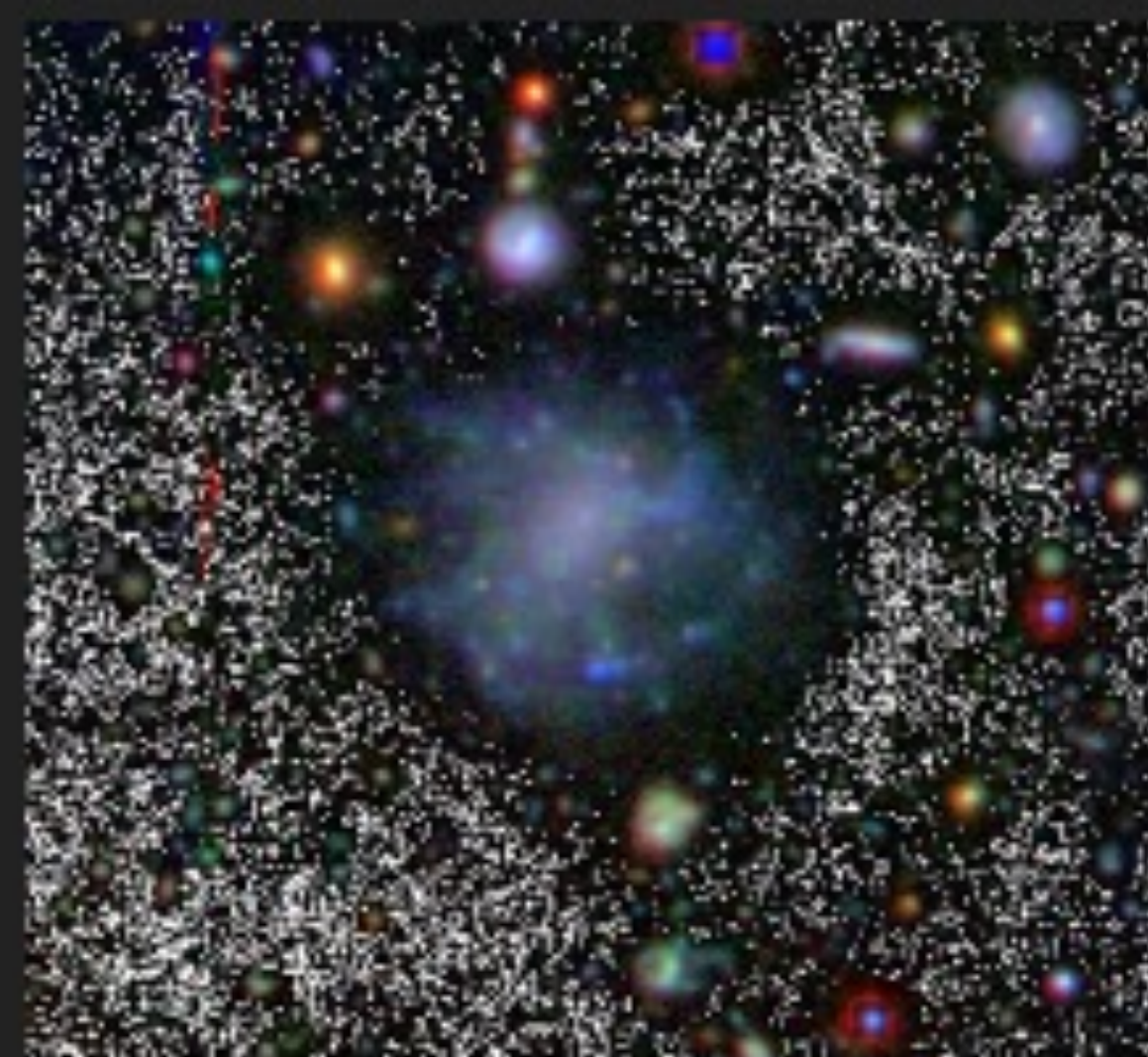


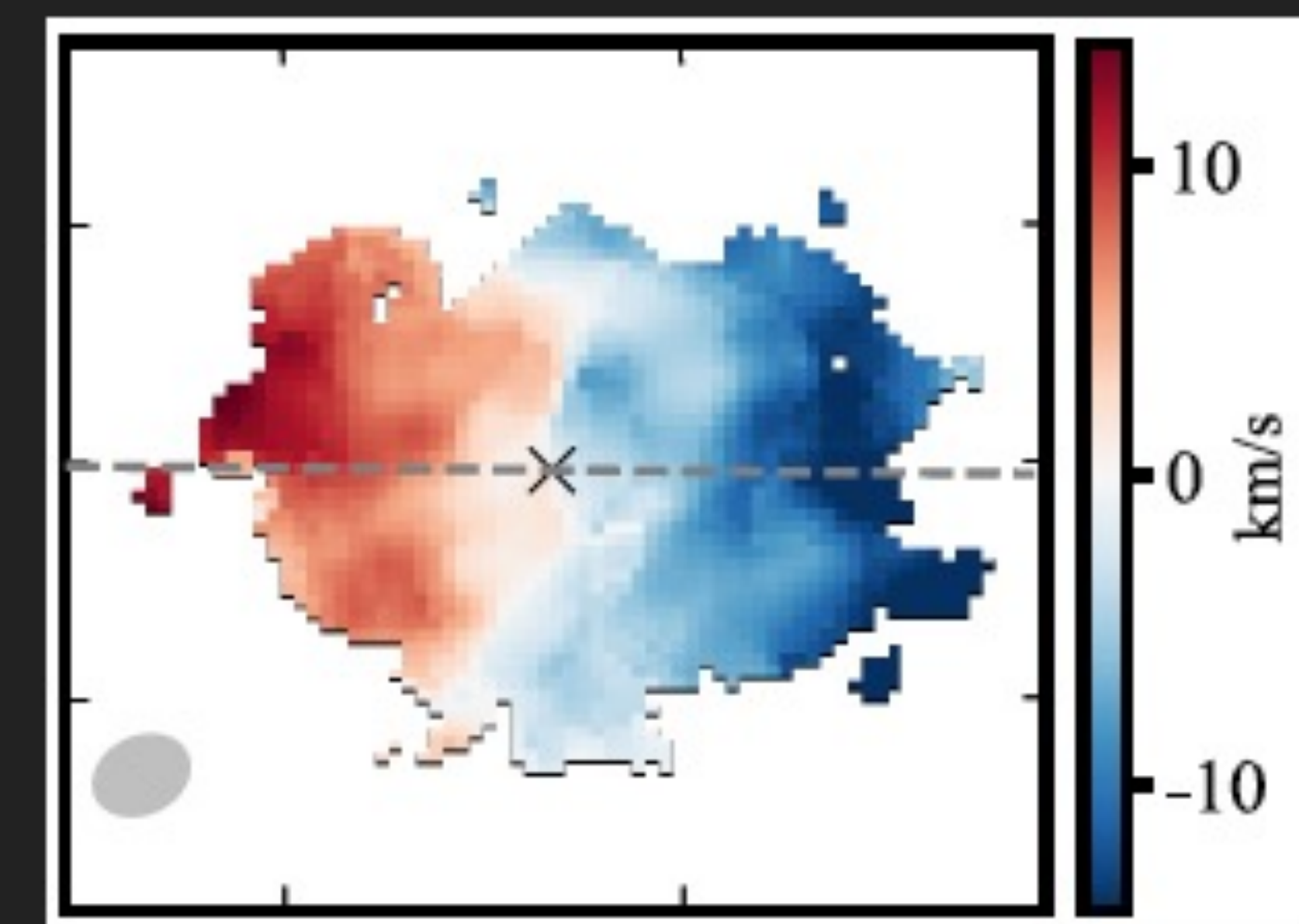
# THE STARTLING DYNAMICS OF GAS-RICH UDGs



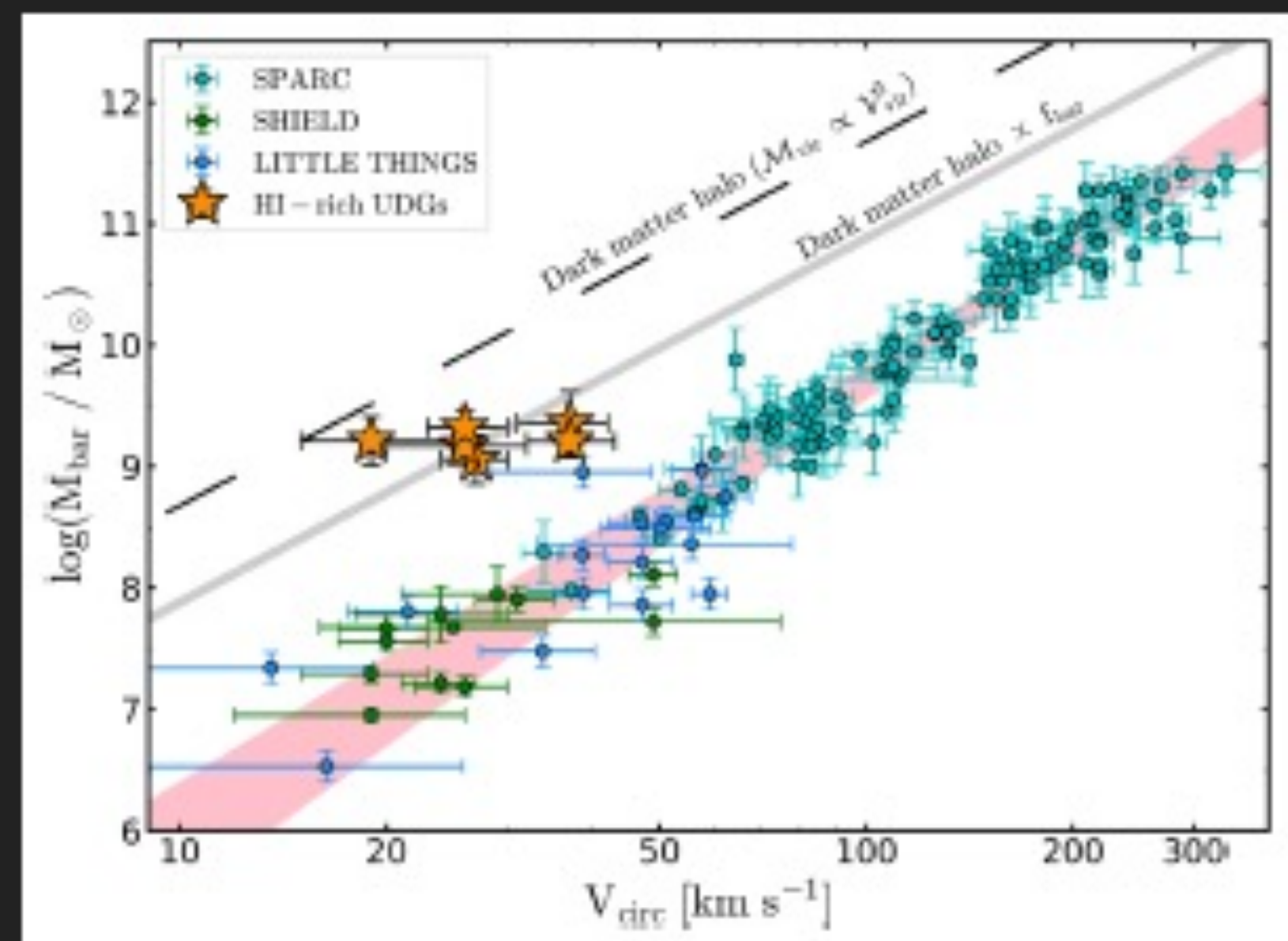
Ultra-diffuse galaxies: mass of dwarfs but light distribution of giants. Models struggle to explain them. Why are they so large? Feedback-driven expansion? High angular momentum?

We observed 6 gas-rich UDGs with WSRT & VLA and modelled their kinematics in 3D

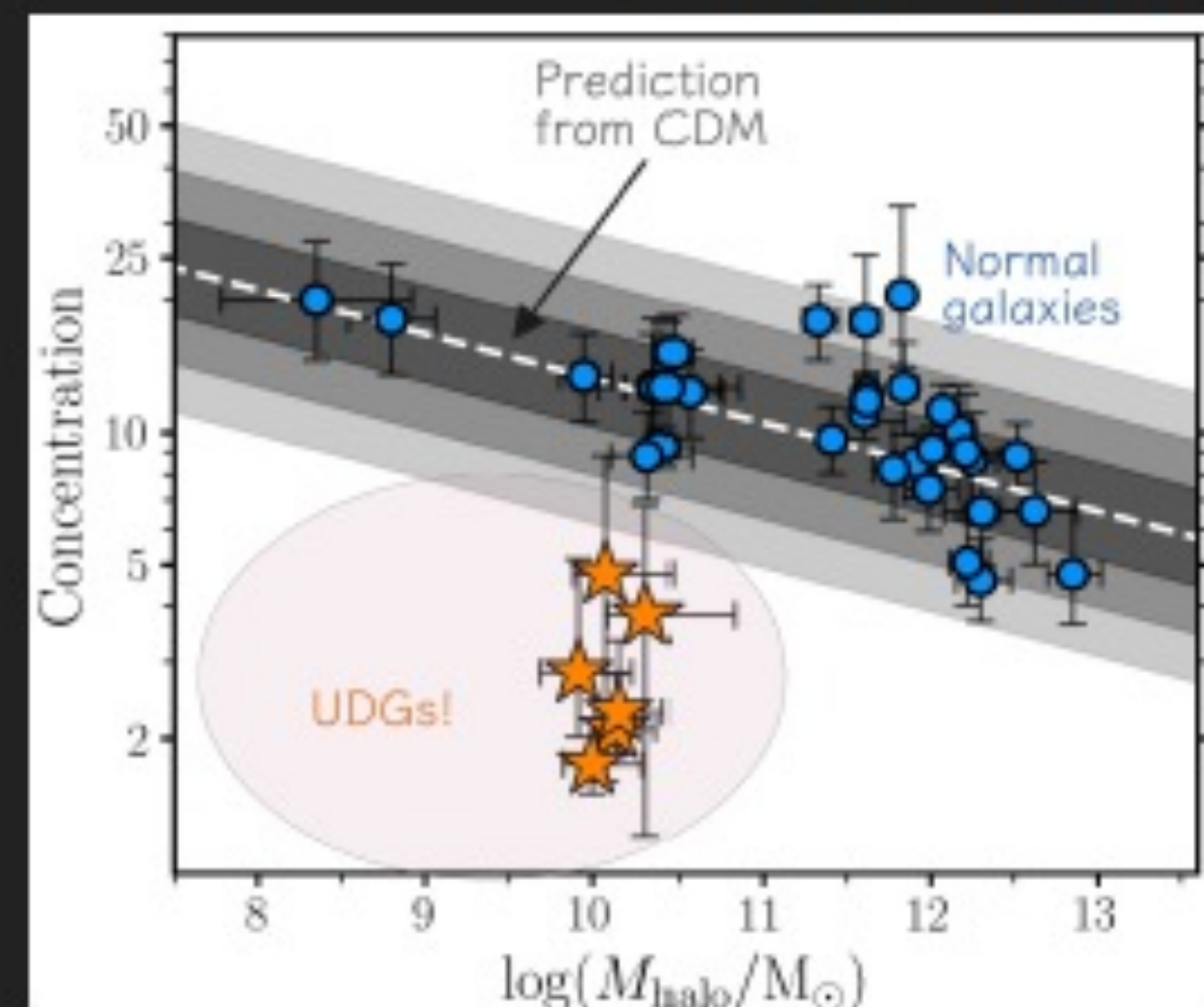
Mancera Piña+19,20,22



Ordered discs, rotation-dominated. Tracing  $V_{\text{flat}}$



Off the Baryonic Tully-Fisher + high baryon fraction



Little DM or extremely low-concentration haloes