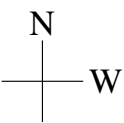


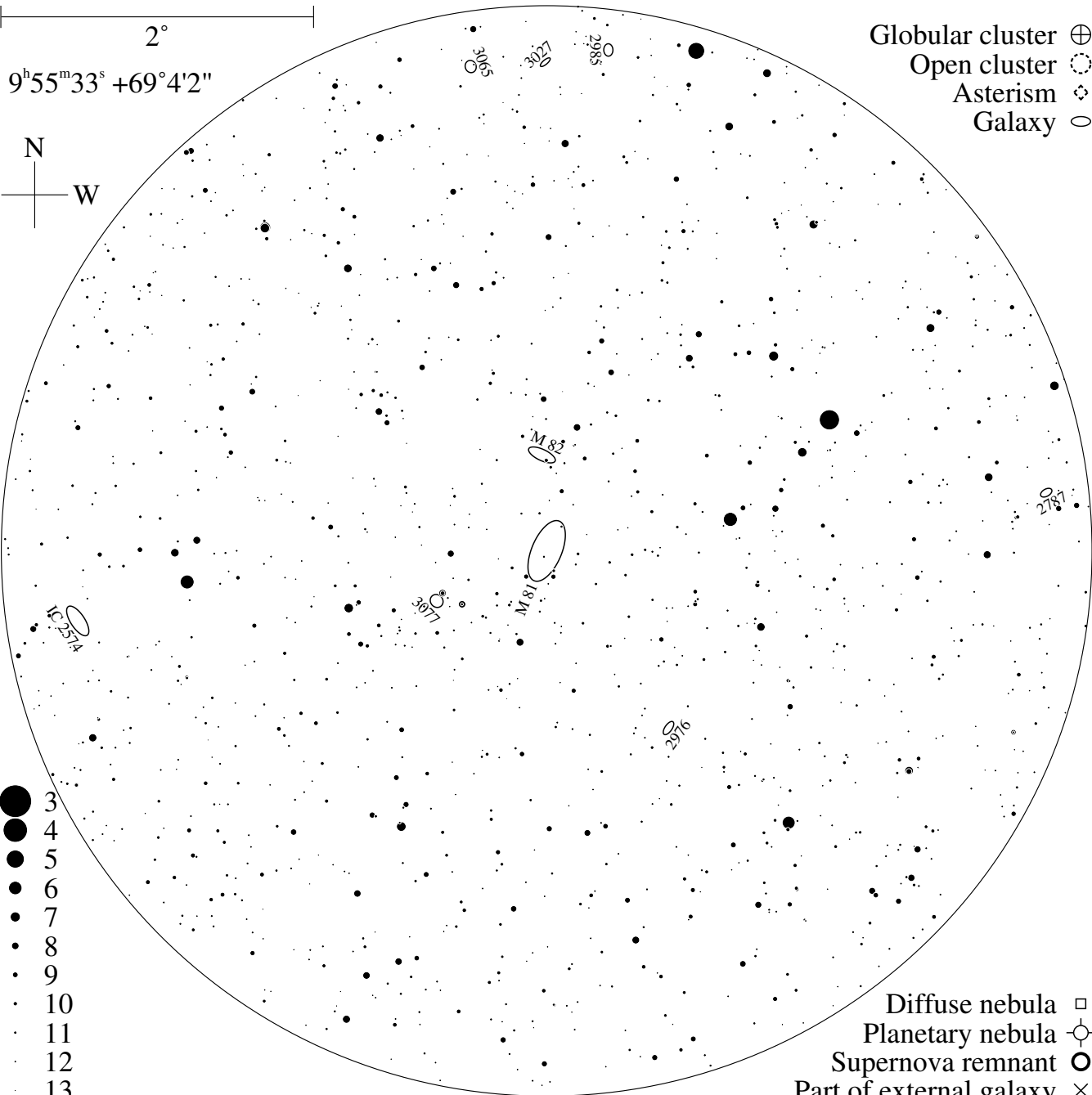
M 81

2°

9^h55^m33^s +69°4'2"



- Globular cluster ⊕
- Open cluster ⊙
- Asterism ⊛
- Galaxy ○



- 3
- 4
- 5
- 6
- 7
- 8
- 9
- 10
- 11
- 12
- 13

- Diffuse nebula
- ⊠ Planetary nebula
- ⊗ Supernova remnant
- × Part of external galaxy