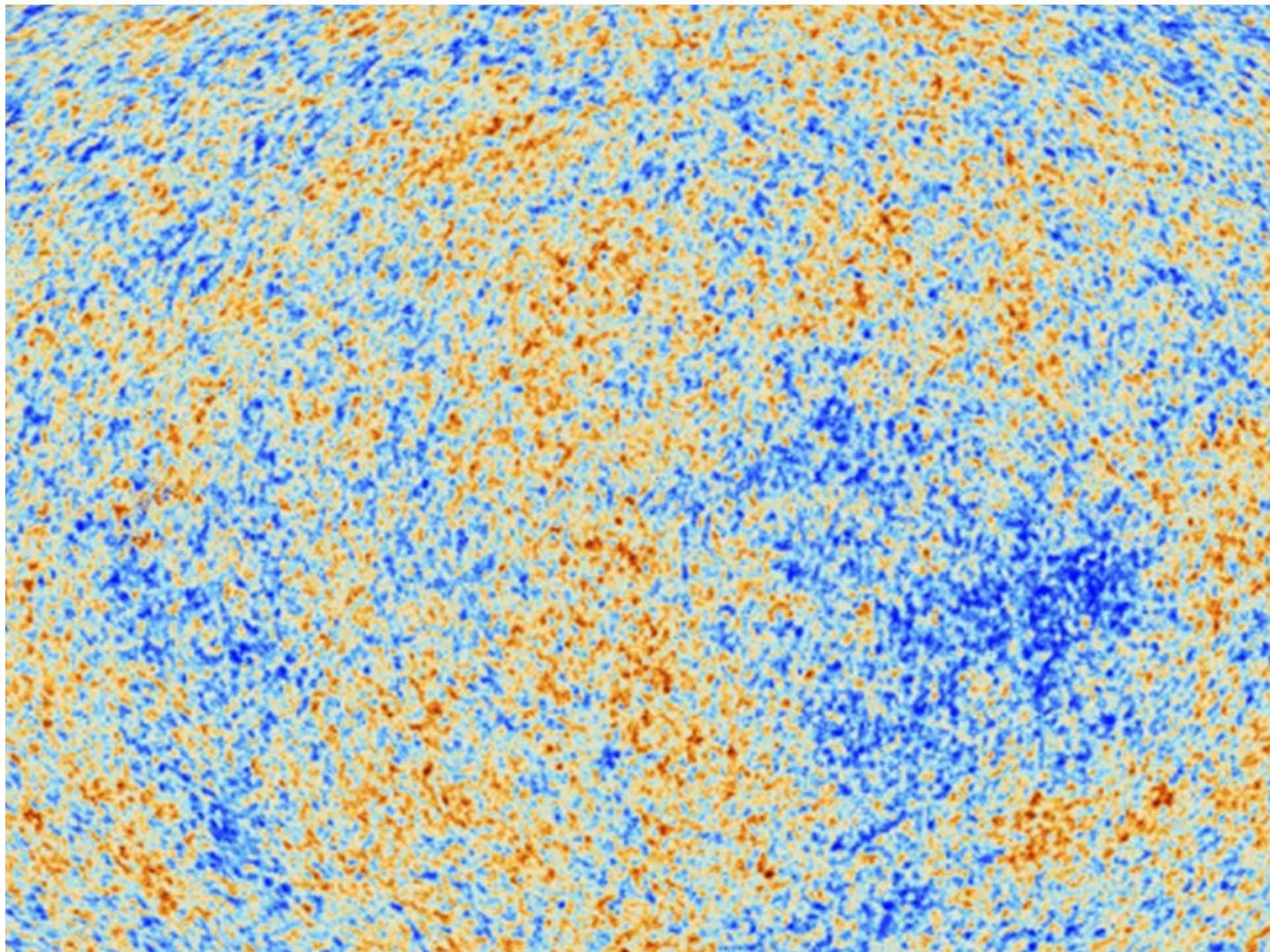




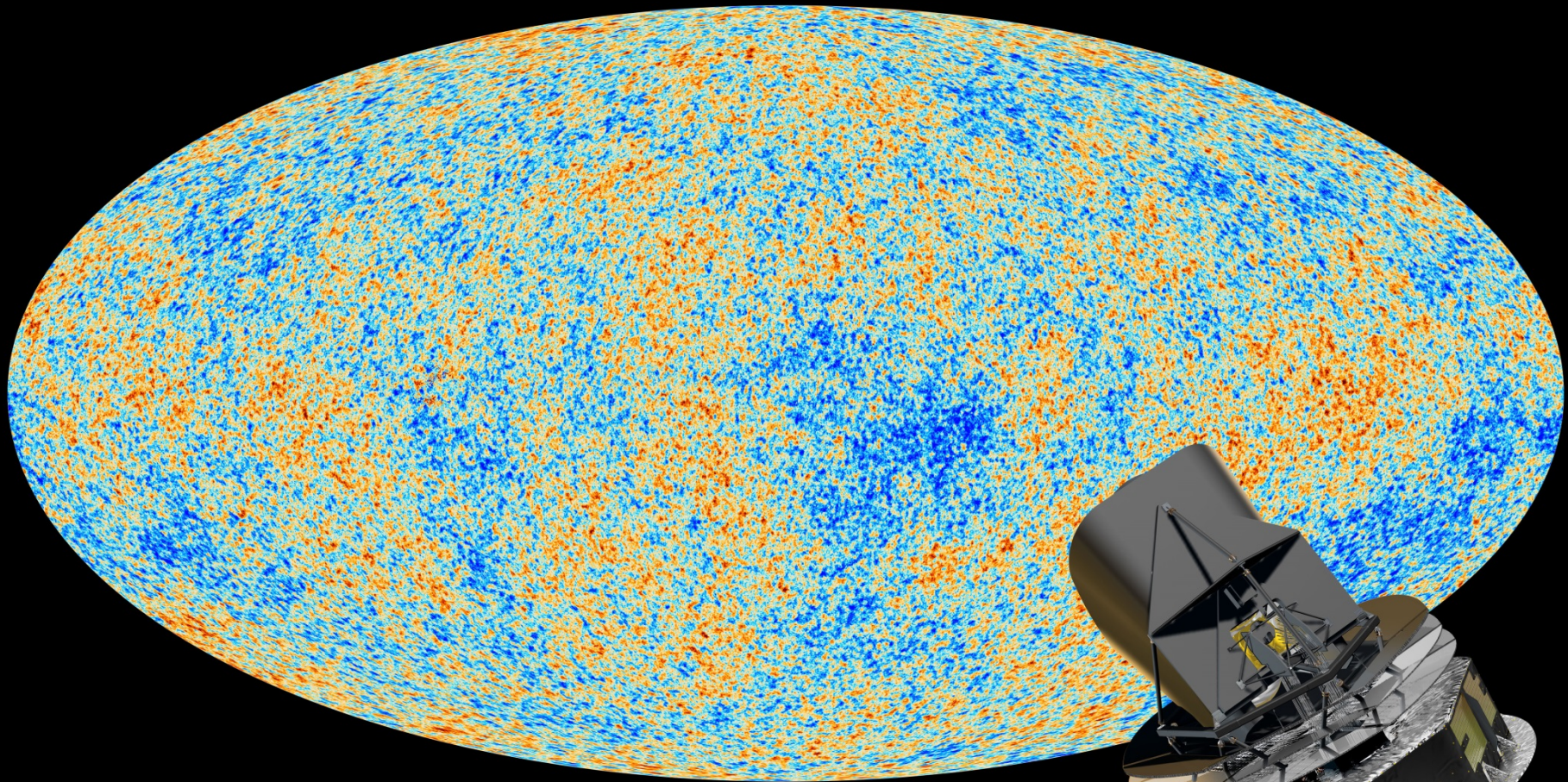
Cosmology

In search of our Origins



Cosmic Origins

- Universe 380.000 yrs after Big Bang
- 13.8 Gyrs ago (13.798±0.037 Gyrs)
- Temperature $T = 2.72548 \pm 0.00057$ K
- temperature/density fluctuations ($\Delta T/T < 10^{-5}$)



**Planck Baby Photo
of our Universe**

Age of Precision Cosmology

Over the past century - in particular the last 2 decades - we have established an amazingly accurate view of the Universe in which we live:

- It was formed in the Hot Big Bang: $T_0 = 13.798 \pm 0.037$ Gigayears ago
- Space (!!!) is expanding ever since: $H_0 = 67.74 \pm 0.46$ km/s/Mpc
expansion accelerating since: 6.7 ± 0.4 Gigayears ago
- It has an average energy density of: $\rho_0 = 0.862 \times 10^{-29}$ g/cm³
- The outer edge/Horizon of the visible Universe:
within Horizon: $d_H \sim 41$ Giga lightyears
galaxies $\sim 100 \times 10^9$
stars $\sim 200 \times 10^{18}$
- On every atom (proton/neutron): $\eta \sim 1.9 \times 10^9$ photons
- Space is almost perfectly flat: $\Omega_k \sim 0.000 \pm 0.005$
- Cosmic composition:
Baryons (protons/neutrons) $\sim 4.9\%$
Dark Matter $\sim 26.8\%$
Dark Energy $\sim 68.3\%$

Cosmology,

Science of the Universe



Cosmology: Science of the Universe

- **Van Dale**
(astronomical) science or theory of the universe as an ordered unity; study of the structure and evolution of the universe.
- **Broadest Sense:**
human enterprise joining science, philosophy, theology and the arts to seek to gain understanding of what unifies and is fundamental to our world.
- **Scientific:**
Study of large and small structures of the Universe



Essential & Existential Questions Occupying Humanity since Dawn of Civilization

- Where does the World come from ?
 - What is the World made of ?
 - How did the World begin ?
 - When did the World begin ?
 - Did it begin at all ?
- How “big” is the World ? (finite, infinite ...)
 - What is the role of humans in the cosmos ?
 - What is the fate of the Universe ?

Cosmic Time: Origin and Fate ?

- Does the Universe have an origin ?
If so, how old is it ?
Or, ... did it always exist, infinitely old ...
- What is the fate of the Universe ?
... will it always be there, or is there an end ?

Energy: Content of the Universe

- What are the components of the Universe ?
- How does each influence the evolution of the Universe ?
... and ...
- How is each influenced by the evolution of the Universe ?

Cosmological Riddles

- Is our Universe unique, or are there many other Universes (multiverse) ... ?
- What made the Universe originate ?

Cosmological Riddles

- **Why are the physical laws as they are ?
Do they need to be ?**
- **How many dimensions does the Universe have?
More than 1 timelike + 3 spacelike ?**

Cosmological Riddles

- ... and ...
- Are our brains sufficiently equipped to understand and answer the ultimate questions ... ?

A unique time ...

- The past century, since 1915, marks a special epoch
- For the first time in human history, we are able to address the great questions of Cosmology ...
- scientifically ...

the Universe

has a

Beginning

Night Sky is Dark



In an infinitely large, old and unchanging Universe each line of sight would hit a star:



Sky would be as bright as surface of star:

Night sky as bright as
Solar Surface, yet
the night sky is dark



finite age of Universe (13.8 Gyr)

Cosmology:

observing

the history of the Universe

Cosmology: exploring Space & Time

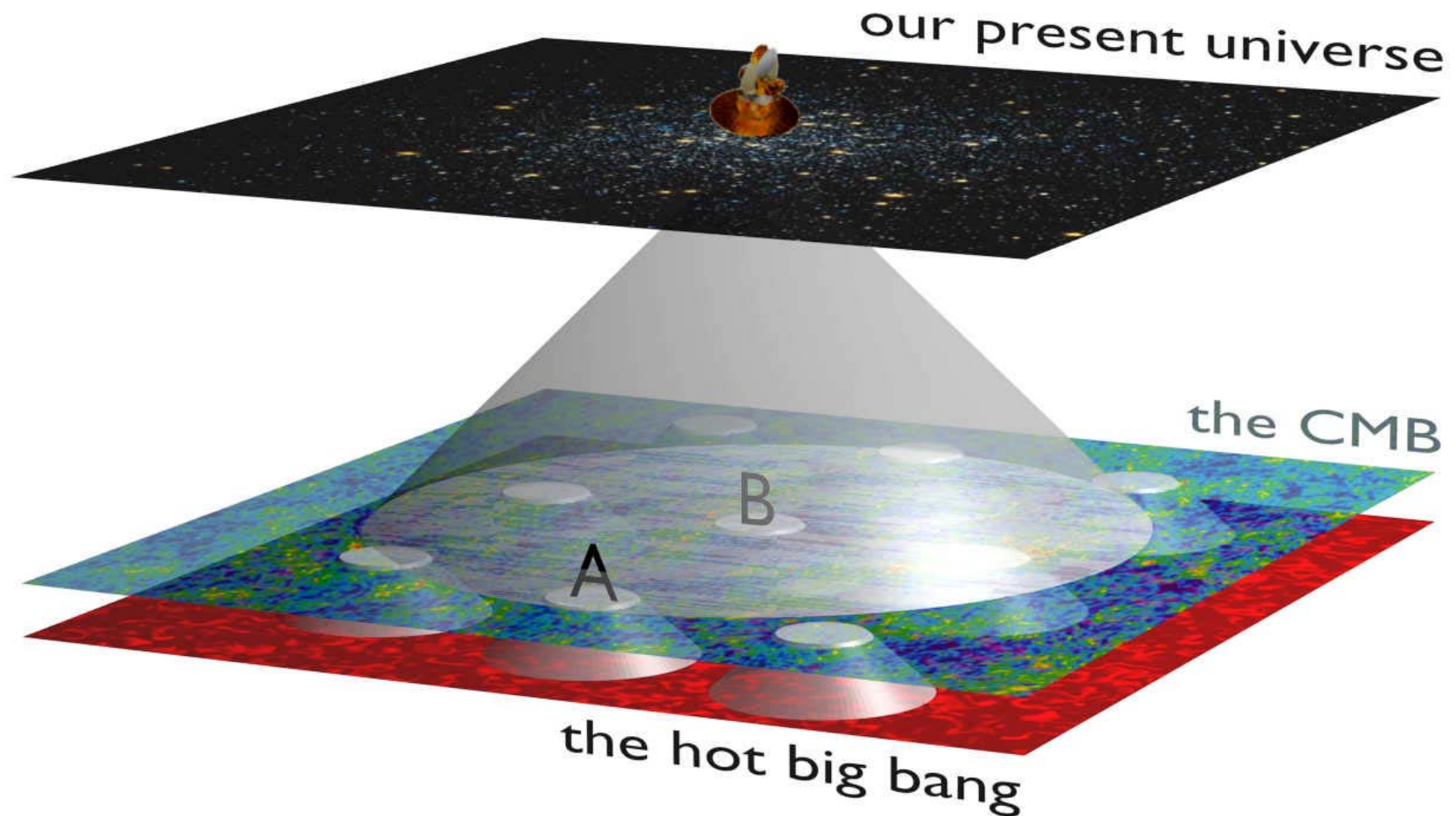
Cosmology is a unique science:

not only it looks out to the deepest realms and
largest scales of our Universe

on cosmological scales,
the finite velocity of light becomes a critical factor ...

thus, it also looks back in time, to the earliest moments,
and thus is the ultimate archaeological science

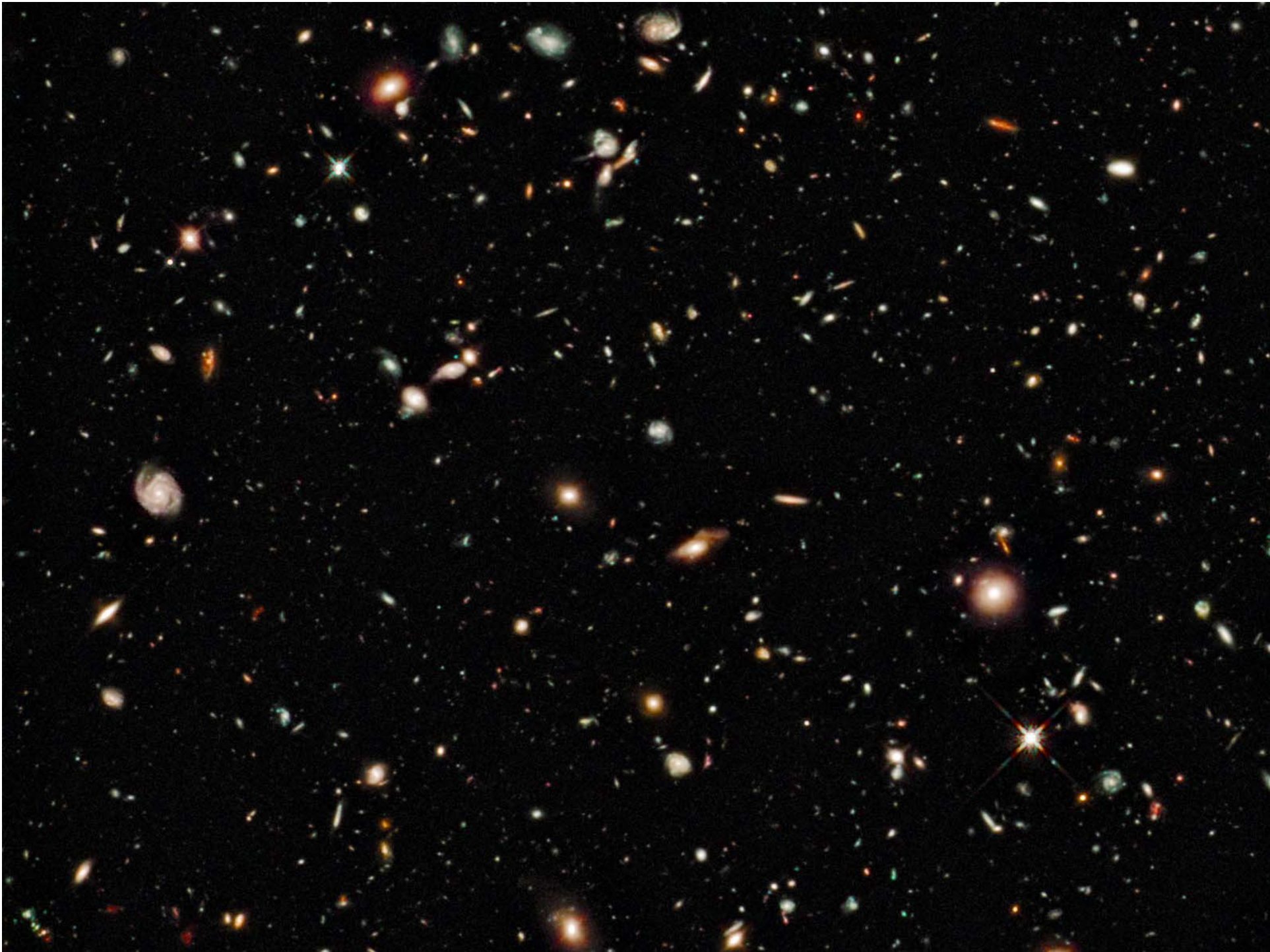
Cosmic Depth = Cosmic Time



Light propagation through the Universe:

light has a finite velocity ($c=300,000$ km/s)

the further you look, the further you look in time !



Hubble Probes the Early Universe



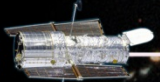
1990

Ground-based observatories



1995

Hubble Deep Field



2004

Hubble Ultra Deep Field



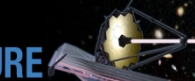
2010

Hubble Ultra Deep Field-IR



FUTURE

James Webb Space Telescope



Redshift (z):

Time after
the Big Bang

Present

1

6
billion
years

4

1.5
billion
years

5

6

7

800
million
years

8

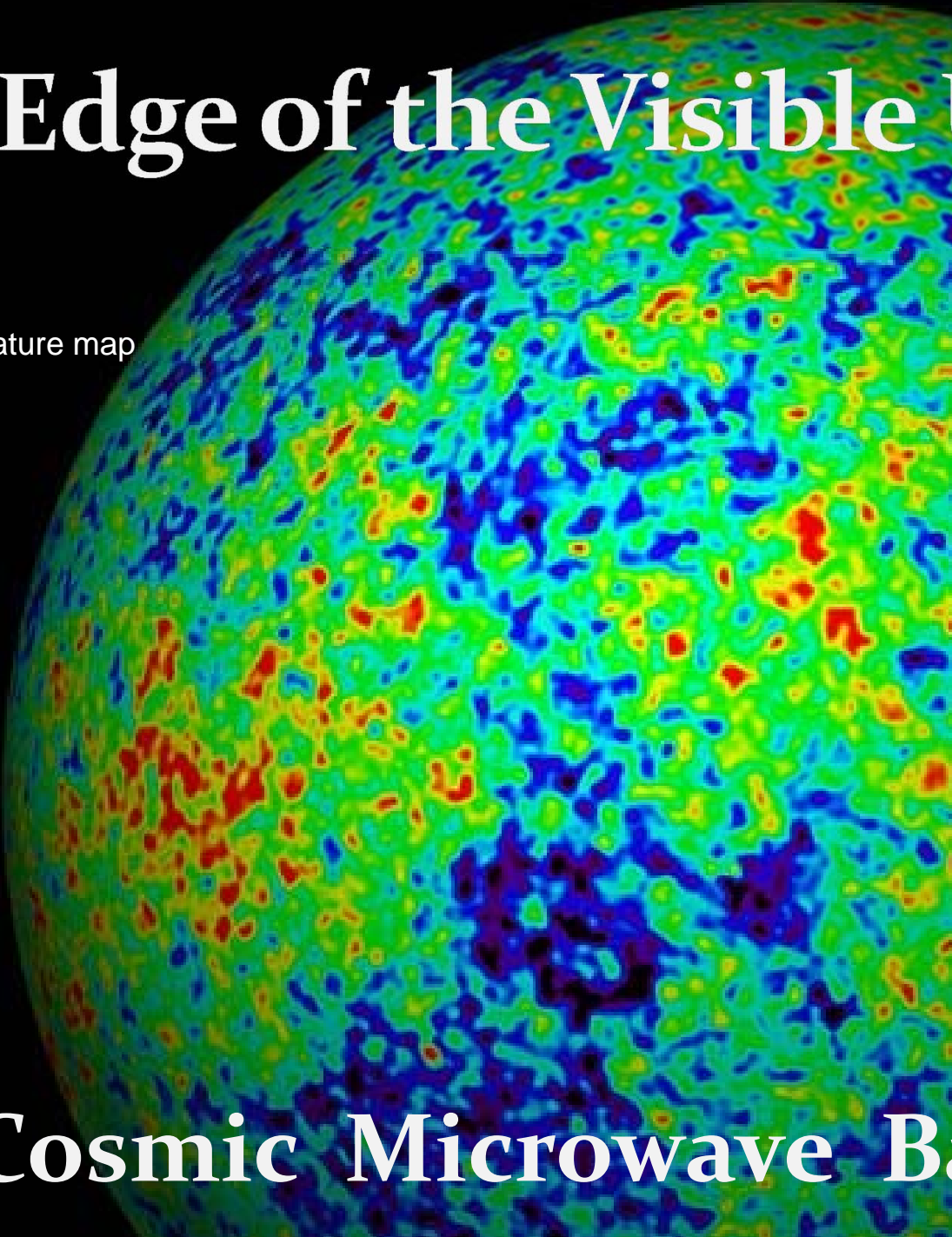
10

480
million
years

>20

200
million
years

Edge of the Visible Universe



WMAP
CMB
temperature map

**Earliest View
of our Cosmos:**

**the Universe
379,000 years
after the Big Bang**

Cosmic Microwave Background

the Universe: a Unique Astrophysical Object

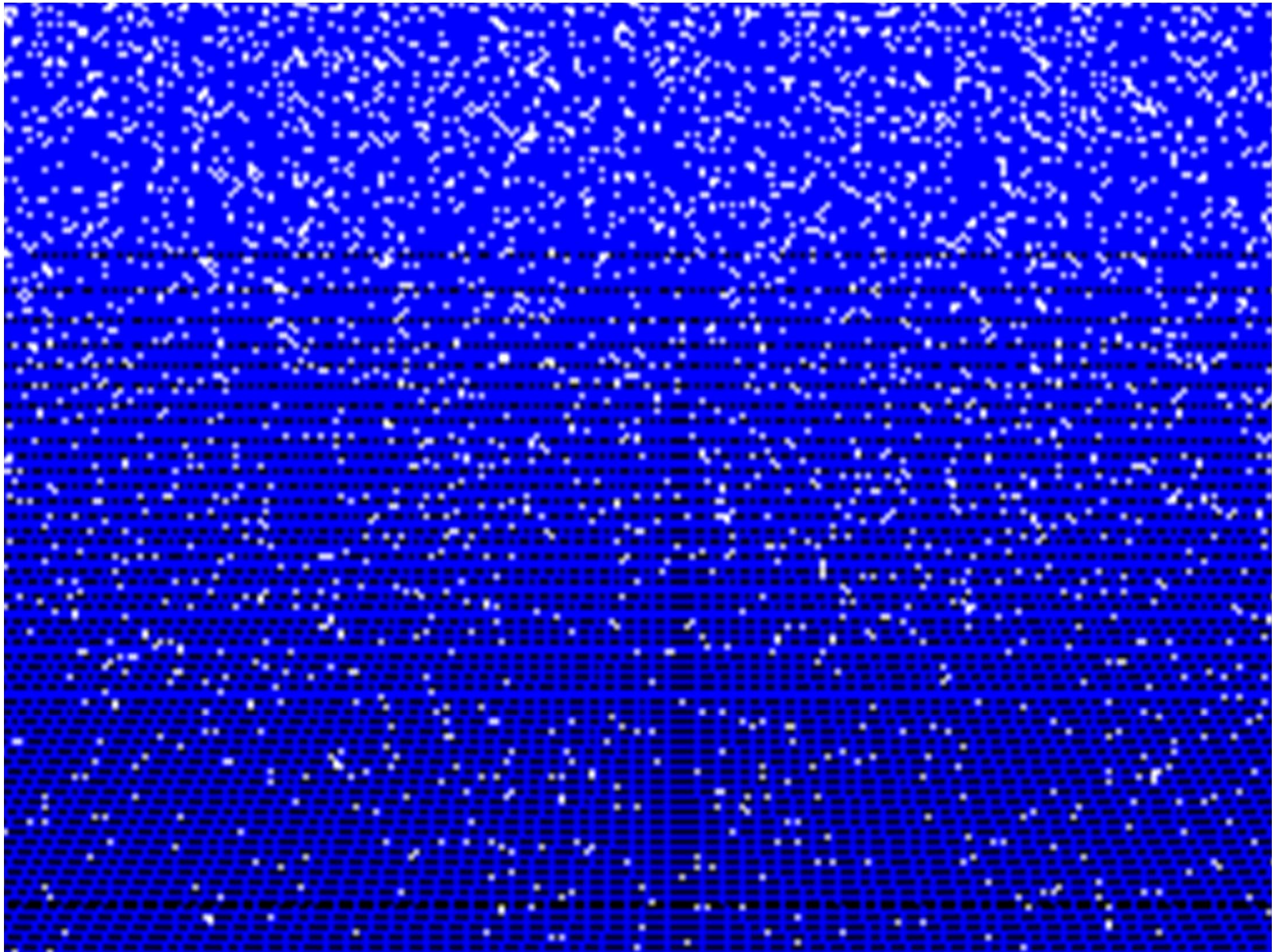
- There is only one (visible) Universe ...
- Finite velocity of light, c :
... a look in depth = a look back in time ...
- c & implications for space-time:
observational cosmology limited to only
a minor thin “shell” of all of spacetime ...

13.8 Gigayears

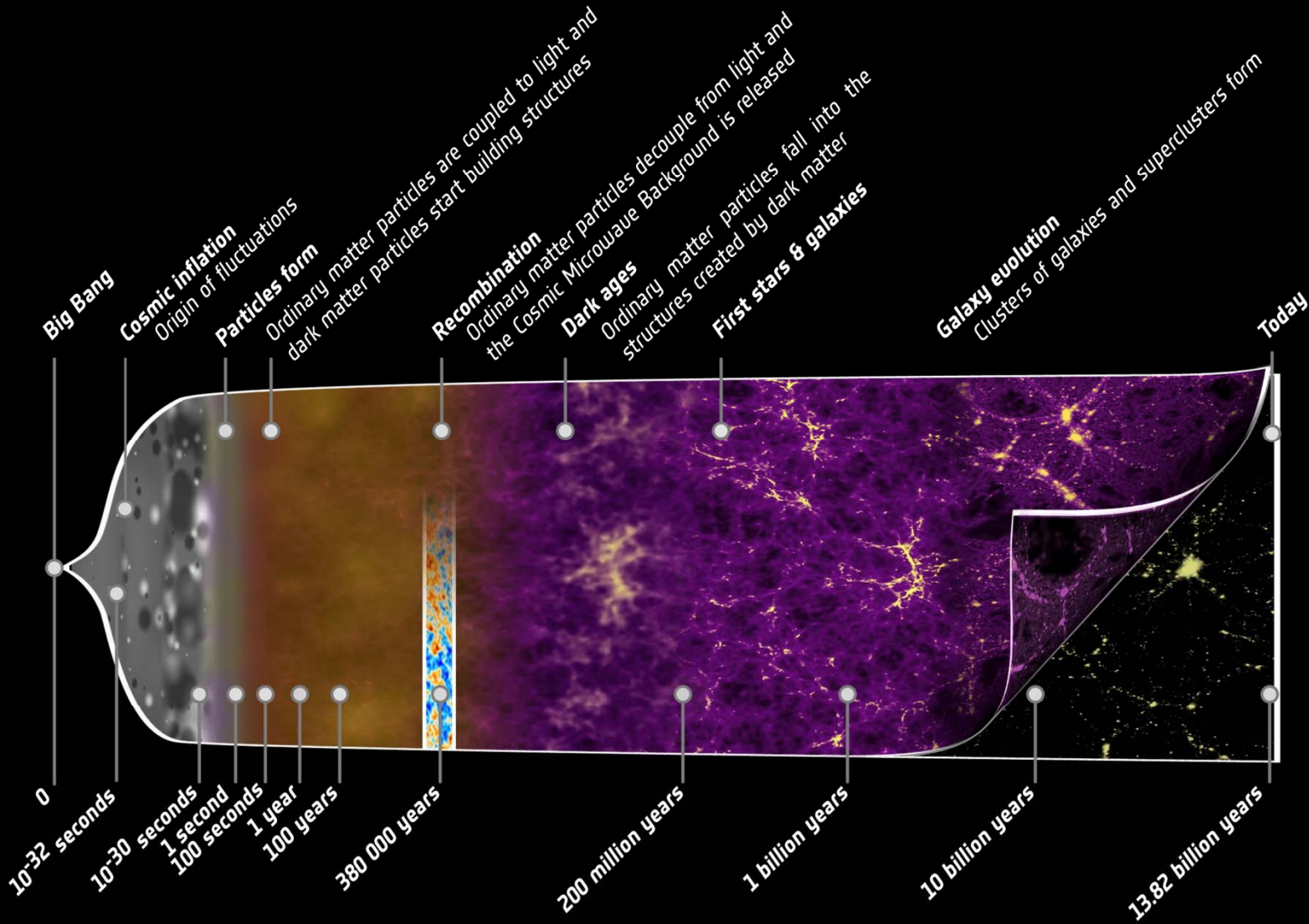
of

Cosmic History





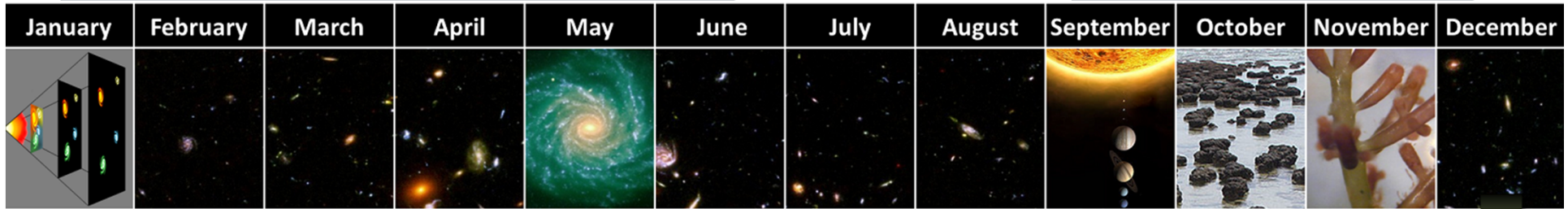
Big Bang Chronology



Cosmic Calendar

Known from telescopes looking back in time, physical models

Geologic record, fossils, genetic drift



The Big Bang


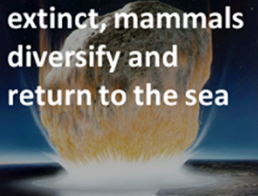

Milky Way disk forms

Solar System and life

Photosynthesis

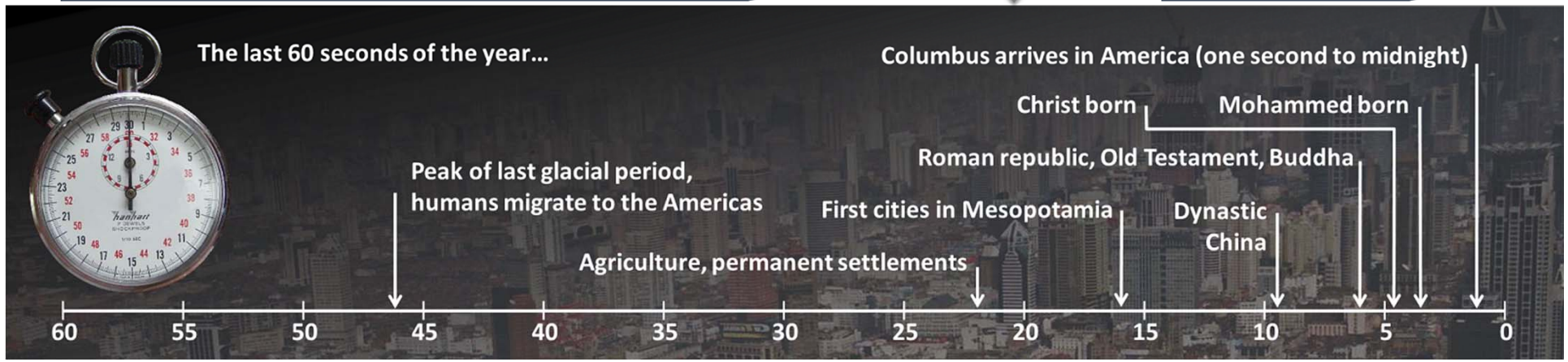
Eukaryotic cells



December 1	2	3	4	5	6	7
8	9	10	11	12	13	14 Sponges
15	16	17 Fish	18	19	20 Land plants	21 Insects
22	23 Reptiles	24	25 Dinosaurs	26 Mammals	27 Pangaea splits	28 Birds, flowers
29 Dinosaurs at top of food chain 	30 Dinosaurs go extinct, mammals diversify and return to the sea 	31 Human evolution 	10:15 AM Ape / gibbon divergence	8:10 PM Human / chimpanzee divergence	10:48 PM <i>Homo erectus</i> evolves	11:54 PM Anatomically modern humans evolve
			11:58 PM Modern humans migrate out of Africa	11:59 PM Neanderthals die out, megafauna stressed		

Known from radiocarbon dating, DNA extraction from remains

Written record



Cosmic Composition

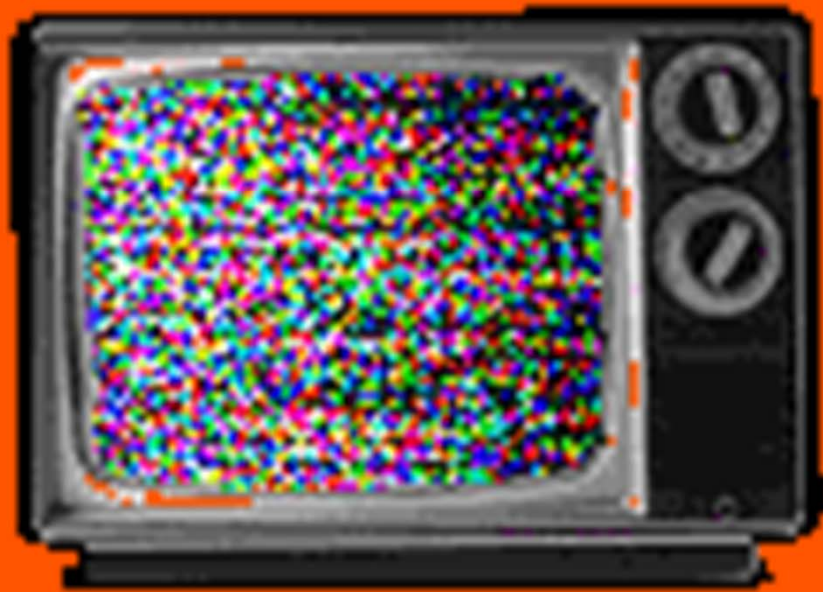
Cosmic Light: most abundant species

By far,
the most abundant particle species
in the Universe

to every proton/neutron

$$n_{\gamma}/n_B \sim 1.9 \text{ billion}$$

the Cosmic TV Show



Note:

The cosmic microwave background is not an exotic phenomenon:

1% of the radiation (noise) on your (camping) tv is this CMB radiation:

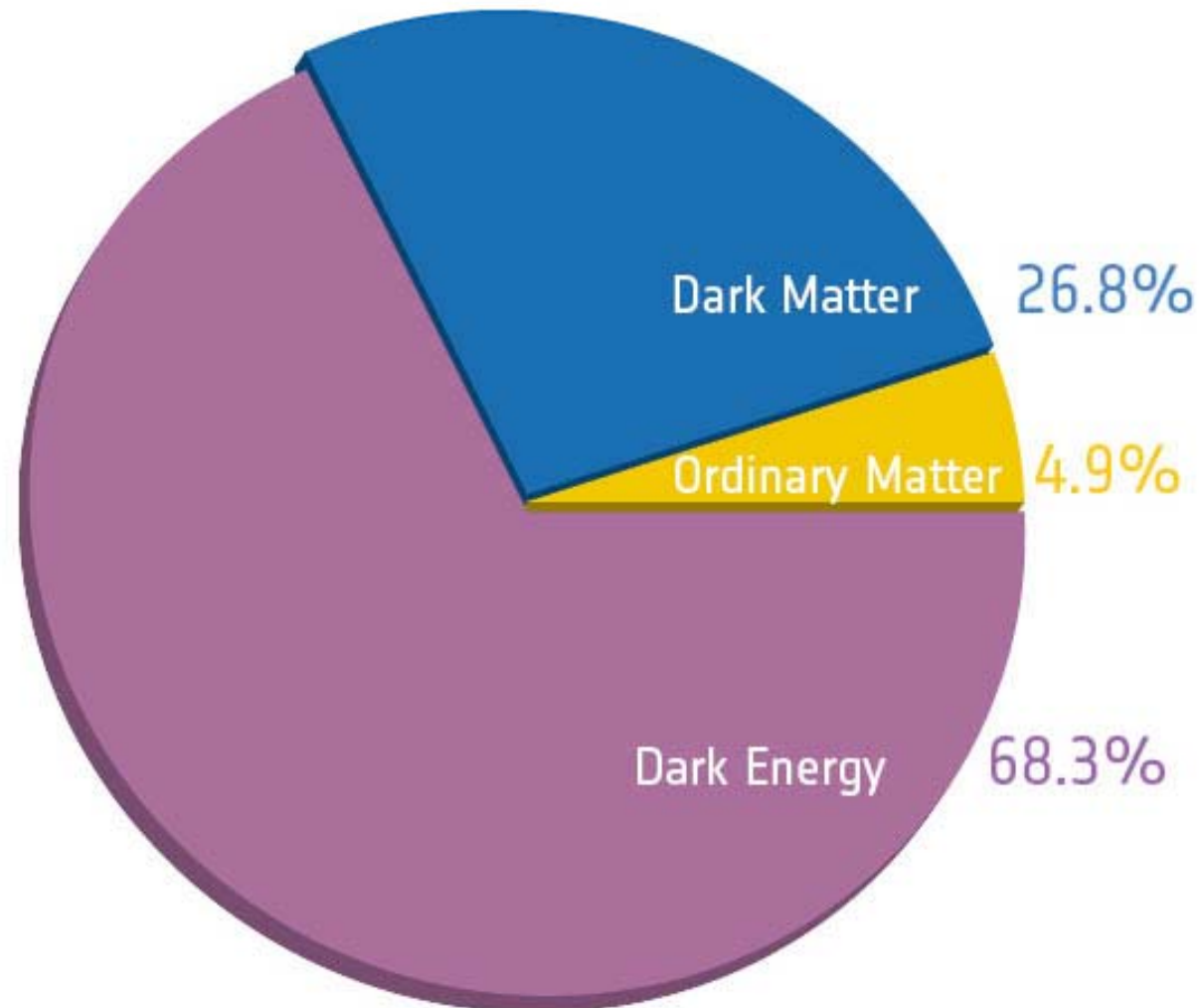
!!!! Live broadcast Big Bang !!!!

Courtesy: W. Hu

Cosmic Energy Inventory

1	dark sector		0.954 ± 0.003
1.1	dark energy		0.72 ± 0.03
1.2	dark matter		0.23 ± 0.03
1.3	primeval gravitational waves		$\lesssim 10^{-10}$
2	primeval thermal remnants		0.0010 ± 0.0005
2.1	electromagnetic radiation		$10^{-4.3 \pm 0.0}$
2.2	neutrinos		$10^{-2.9 \pm 0.1}$
2.3	prestellar nuclear binding energy		$-10^{-4.1 \pm 0.0}$
3	baryon rest mass		0.045 ± 0.003
3.1	warm intergalactic plasma		0.040 ± 0.003
3.1a	virialized regions of galaxies	0.024 ± 0.005	
3.1b	intergalactic	0.016 ± 0.005	
3.2	intracluster plasma		0.0018 ± 0.0007
3.3	main sequence stars	spheroids and bulges	0.0015 ± 0.0004
3.4		disks and irregulars	0.00055 ± 0.00014
3.5	white dwarfs		0.00036 ± 0.00008
3.6	neutron stars		0.00005 ± 0.00002
3.7	black holes		0.00007 ± 0.00002
3.8	substellar objects		0.00014 ± 0.00007
3.9	HI + HeI		0.00062 ± 0.00010
3.10	molecular gas		0.00016 ± 0.00006
3.11	planets		10^{-6}
3.12	condensed matter		$10^{-5.6 \pm 0.3}$
3.13	sequestered in massive black holes		$10^{-5.4}(1 + \epsilon_n)$
4	primeval gravitational binding energy		$-10^{-6.1 \pm 0.1}$
4.1	virialized halos of galaxies		$-10^{-7.2}$
4.2	clusters		$-10^{-6.9}$
4.3	large-scale structure		$-10^{-6.2}$

Cosmic Constituents



Fate

of the Universe

Nobel Prize Physics 2011



“the most startling discovery in physics since I have been in the field.”

E. Witten

“I was shocked by my discovery, I just assumed we made a mistake”

Brian Schmidt

Accelerated Expansion of the Universe

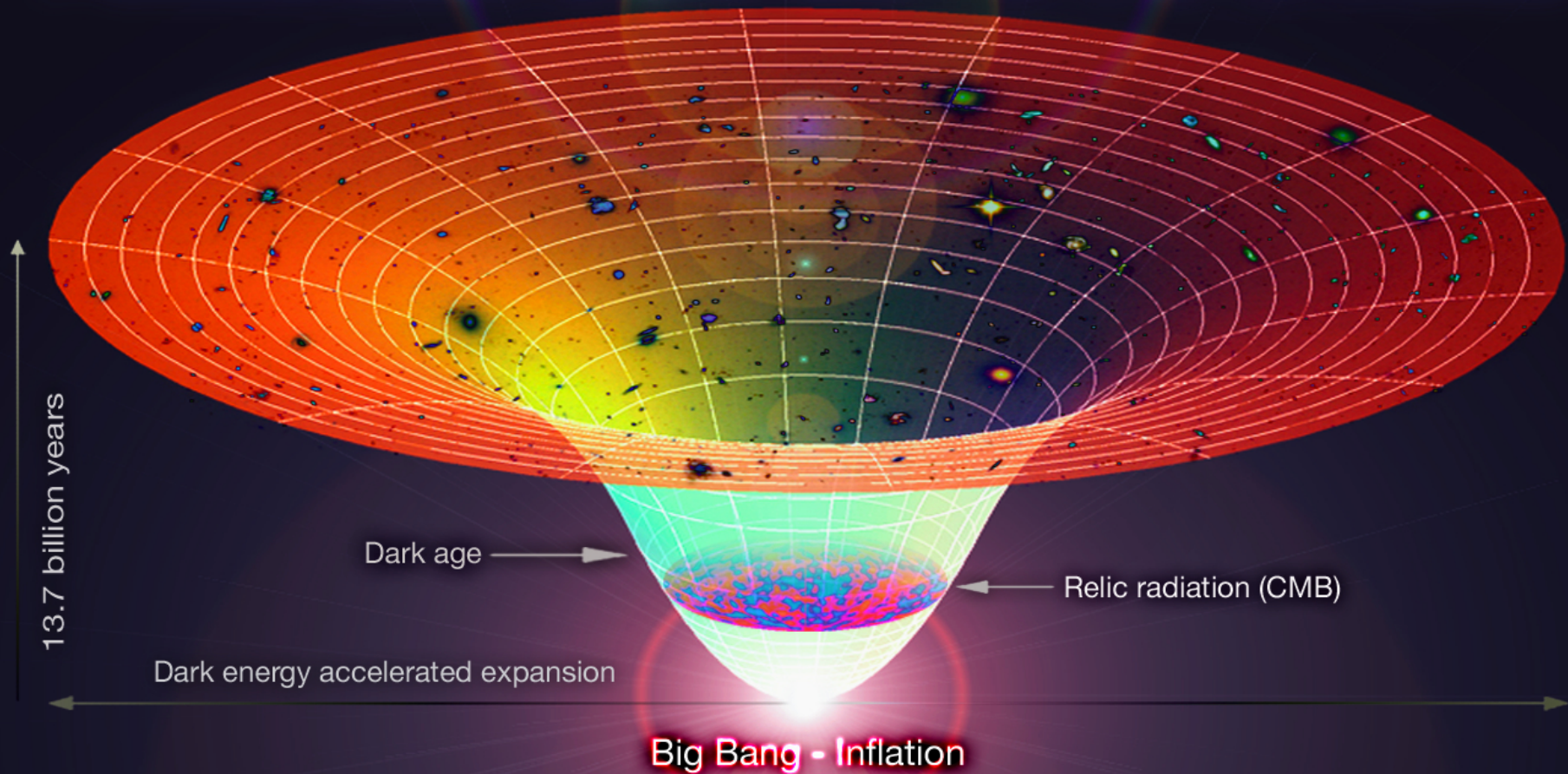


image: Coldcreation

Cosmic Fate

100 Gigayears: the end of Cosmology



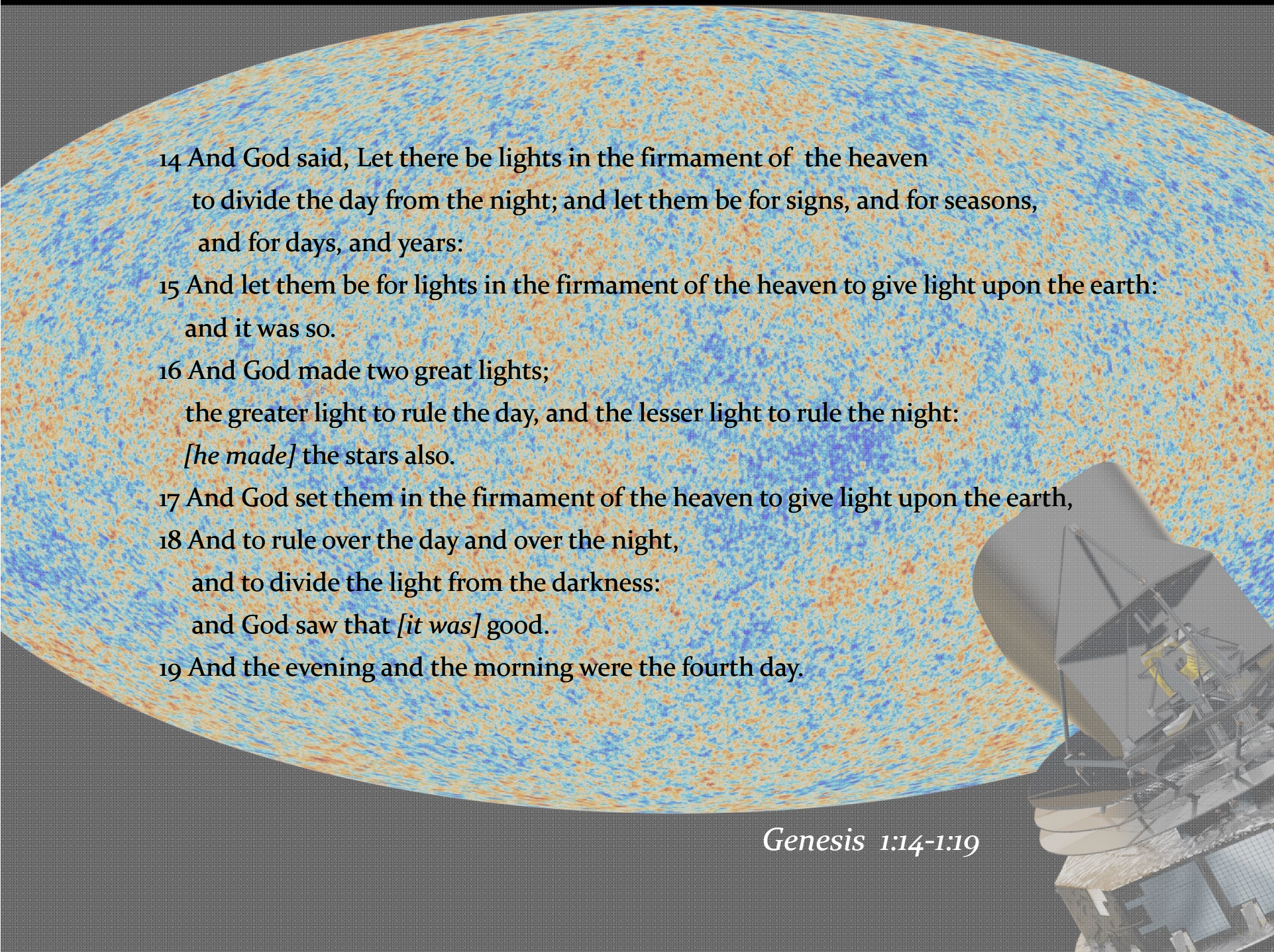
Cosmology

Ancient Answers



**"In the beginning God
created the heavens and the earth"**

Genesis 1; 1-26



14 And God said, Let there be lights in the firmament of the heaven
to divide the day from the night; and let them be for signs, and for seasons,
and for days, and years:

15 And let them be for lights in the firmament of the heaven to give light upon the earth:
and it was so.

16 And God made two great lights;
the greater light to rule the day, and the lesser light to rule the night:
[he made] the stars also.

17 And God set them in the firmament of the heaven to give light upon the earth,
18 And to rule over the day and over the night,
and to divide the light from the darkness:
and God saw that *[it was]* good.

19 And the evening and the morning were the fourth day.

Genesis 1:14-1:19

Enuma Elis

Enuma Elis is
the Babylonian creation mythos.

Striking similarity to Genesis

Important source for understanding
Babylonian worldview, centered on the
supremacy of Marduk
and the creation of humankind for the
service of the gods.



When the sky above was not named
And the earth beneath did not yet bear a name
And the primeval Apsu, who begat them,
And chaos, Tiamat, the mother of them both,
Their waters were mingled together,
And no field was formed, no marsh was to be seen;
When the gods none had been called into being.

Marduk and the Dragon

Marduk, chief god of Babylon, destroys – with his thunderbolt –
Tiamat the dragon of primeval chaos

Hindu Cosmology

- **The Nasadiya Sukta**
(after the incipit *ná ásat* "not the non-existent"), also known as the
- **Hymn of Creation,**
is the 129th hymn of the 10th Mandala of the
- **Rigveda (10:129).**
It is concerned with cosmology and the origin of the universe

Nasadiya Sukta – Hymn of Creation

There was neither non-existence nor existence then;
Neither the realm of space, nor the sky which is beyond;
What stirred? Where? In whose protection?

There was neither death nor immortality then;
No distinguishing sign of night nor of day;
That One breathed, windless, by its own impulse;
Other than that there was nothing beyond.

Darkness there was at first, by darkness hidden;
Without distinctive marks, this all was water;
That which, becoming, by the void was covered;
That One by force of heat came into being;

Who really knows? Who will here proclaim it?
Whence was it produced? Whence is this creation?
Gods came afterwards, with the creation of this universe.

Who then knows whence it has arisen?

Whether God's will created it, or whether He was mute;
Perhaps it formed itself, or perhaps it did not;
Only He who is its overseer in highest heaven knows,
Only He knows, or perhaps He does not know.

Jain Cosmology

According to Jain doctrine,

- the universe and its constituents always existed
- the universe was not created, and there is no creator

The Jain Cosmic Wheel of time

