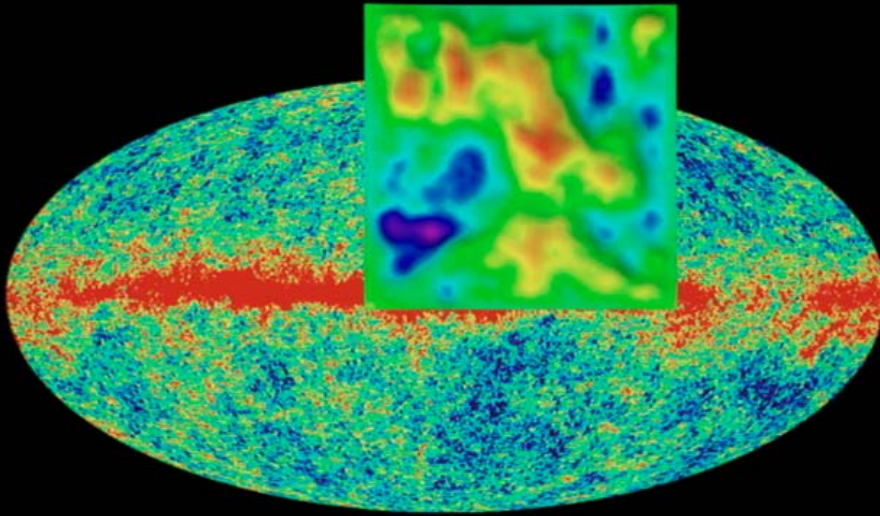
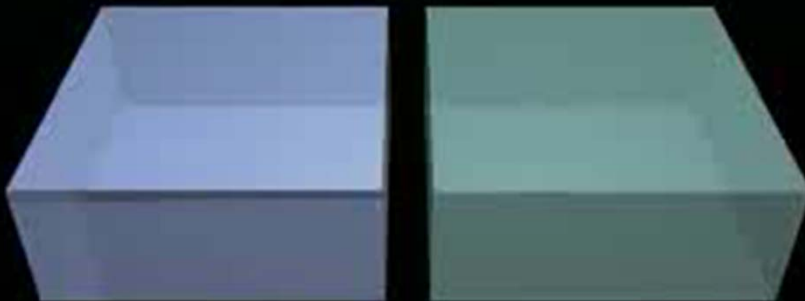


Cosmic Sound Waves

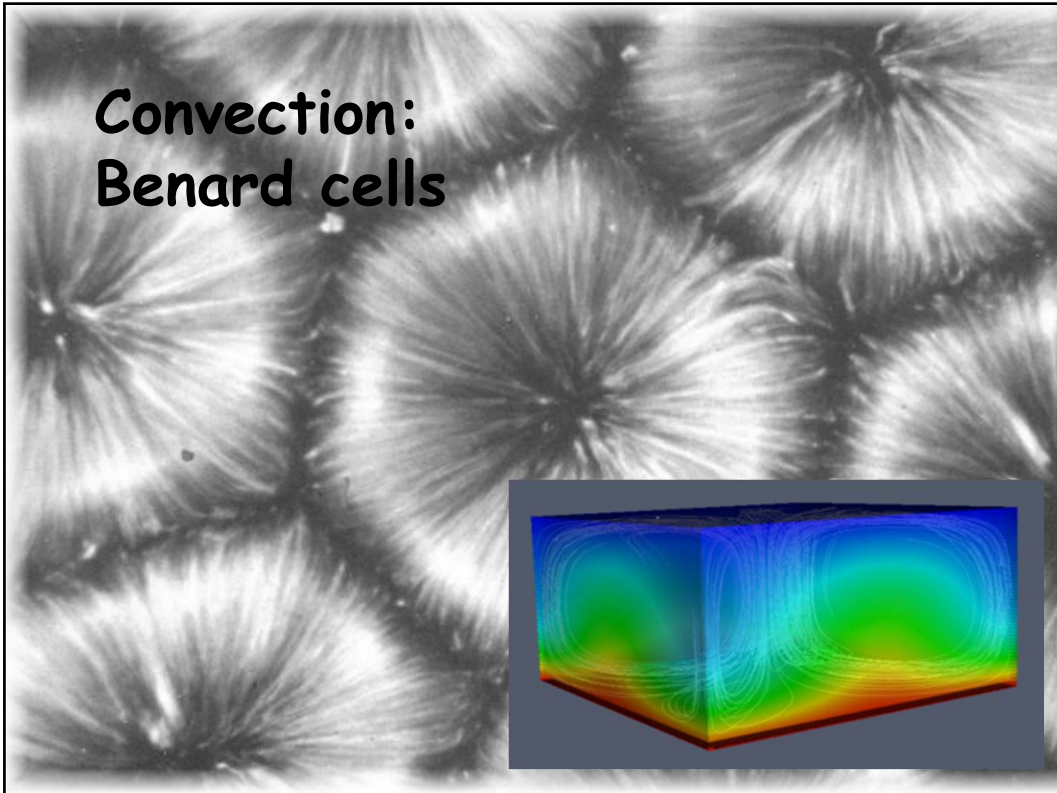


Primordial Sound Ripples seen in
WMAP Cosmic Microwave Background

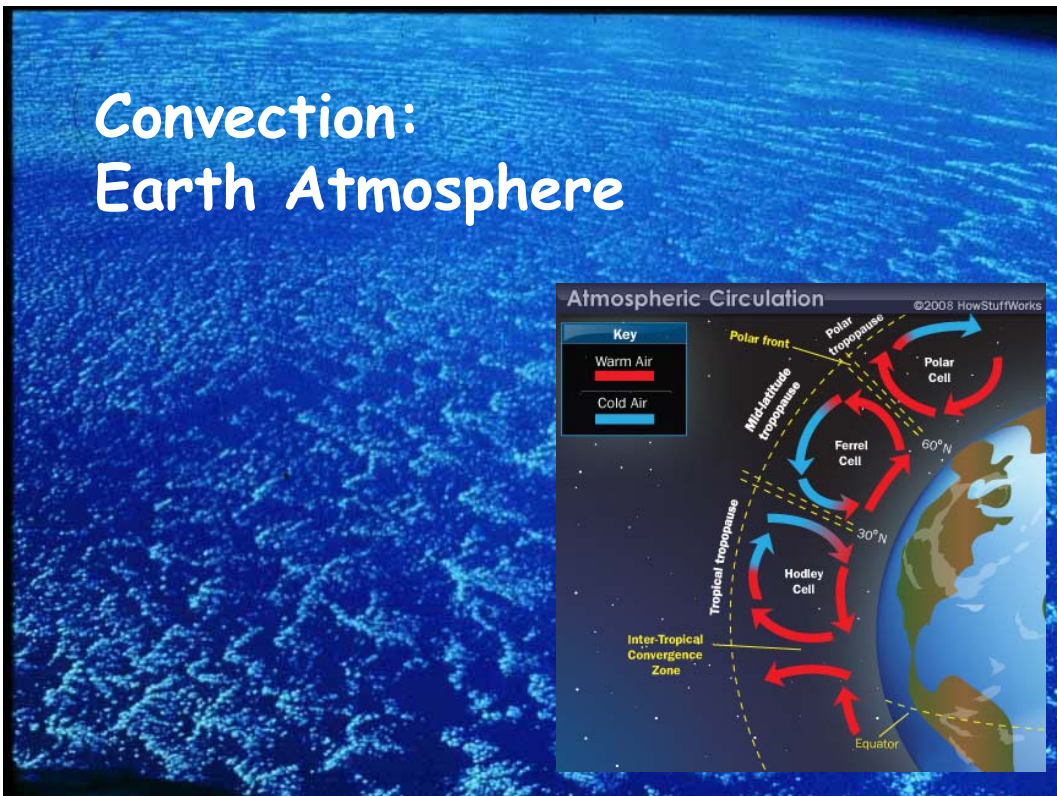
Cosmic Sound Waves

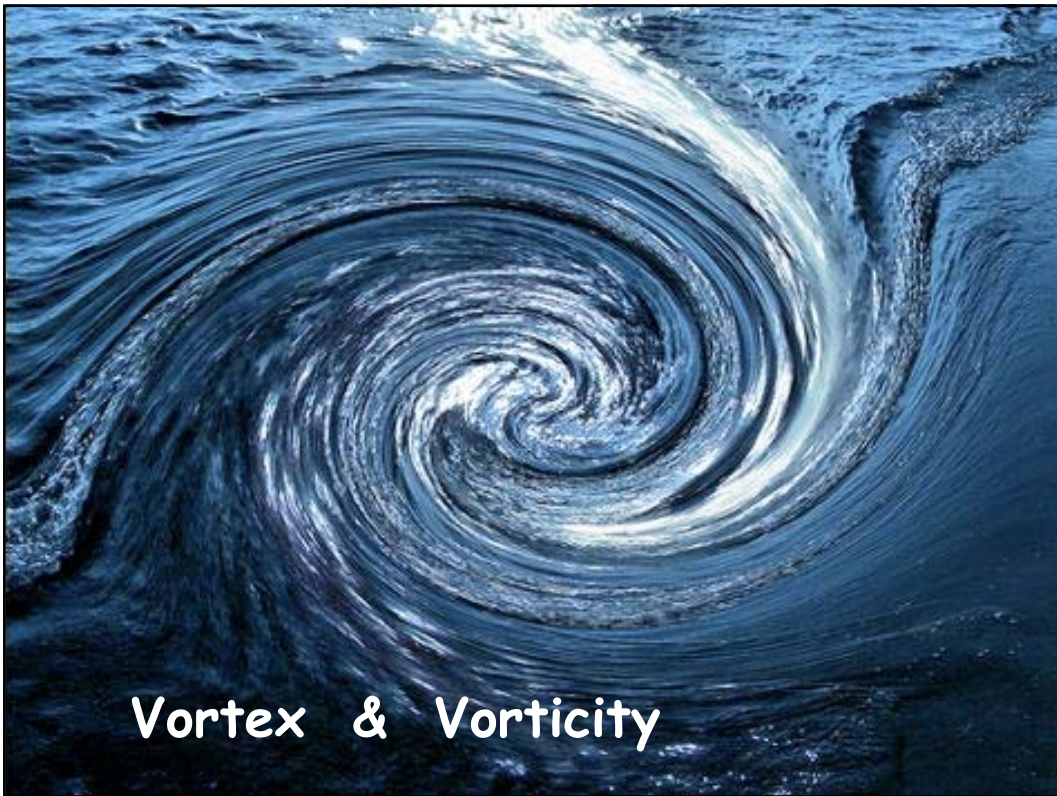
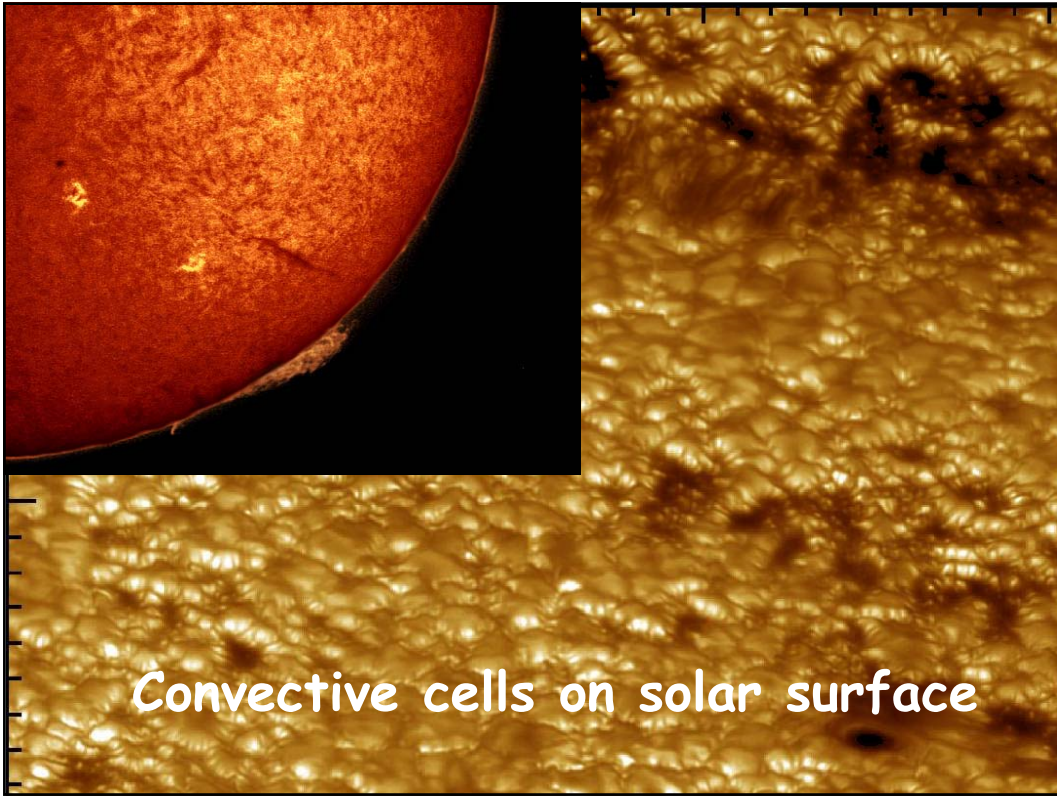


Convection: Benard cells

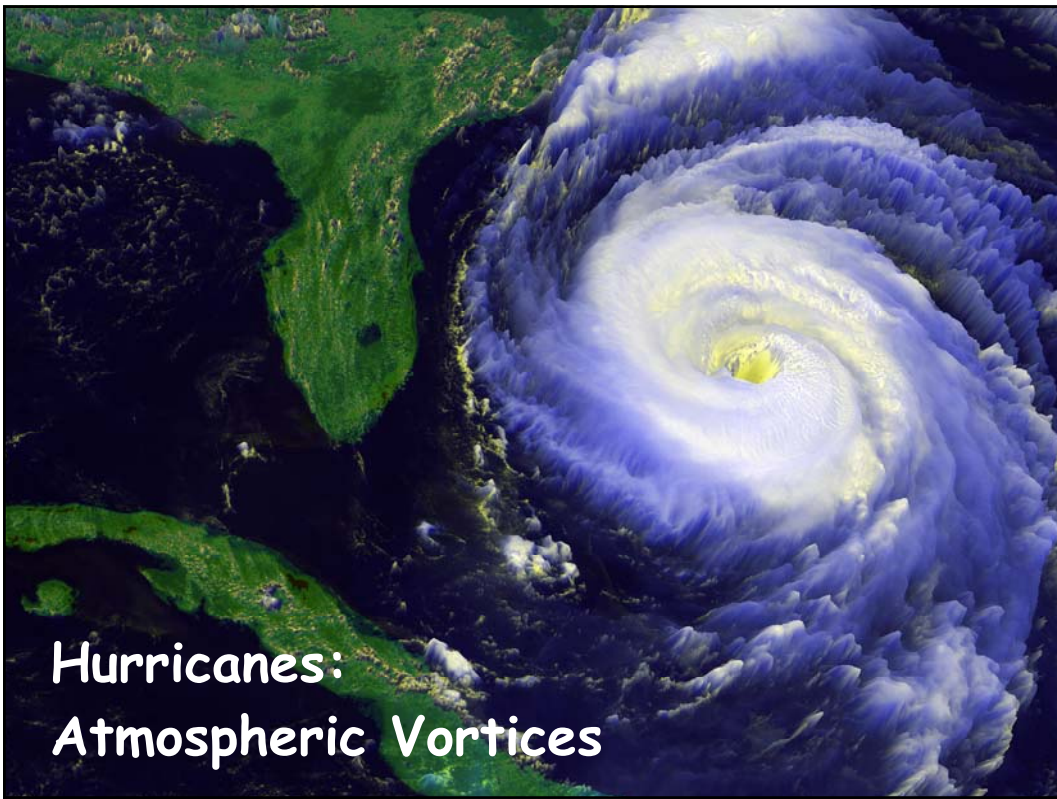


Convection: Earth Atmosphere

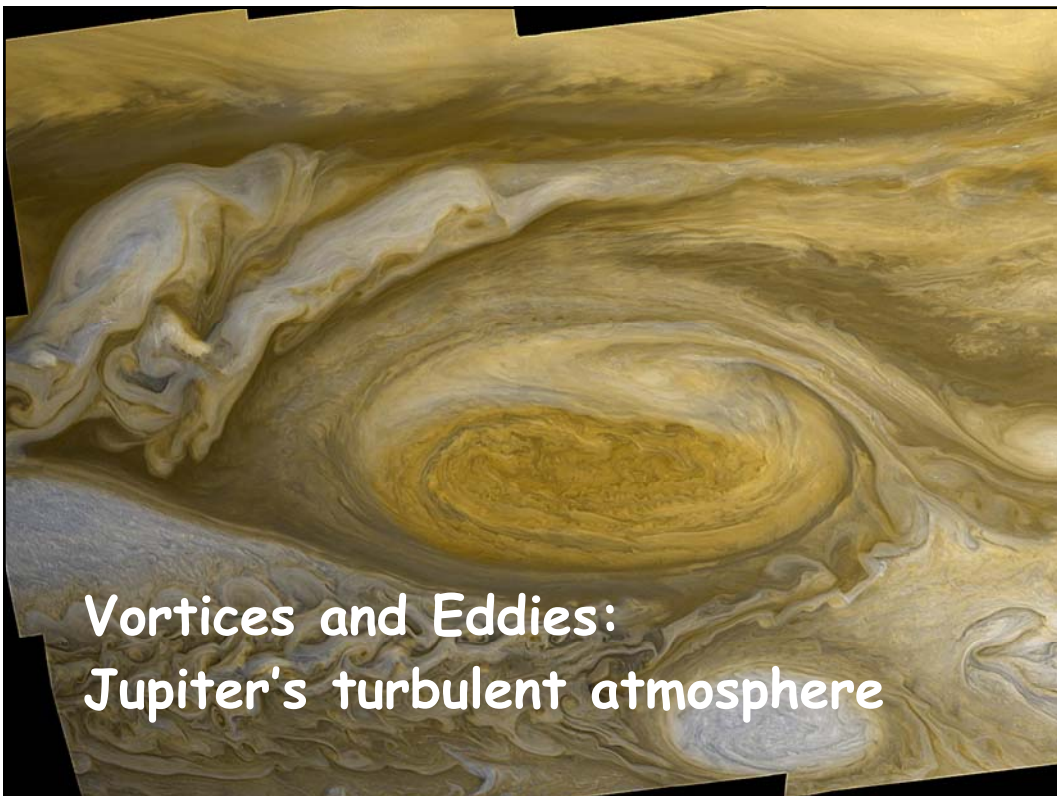




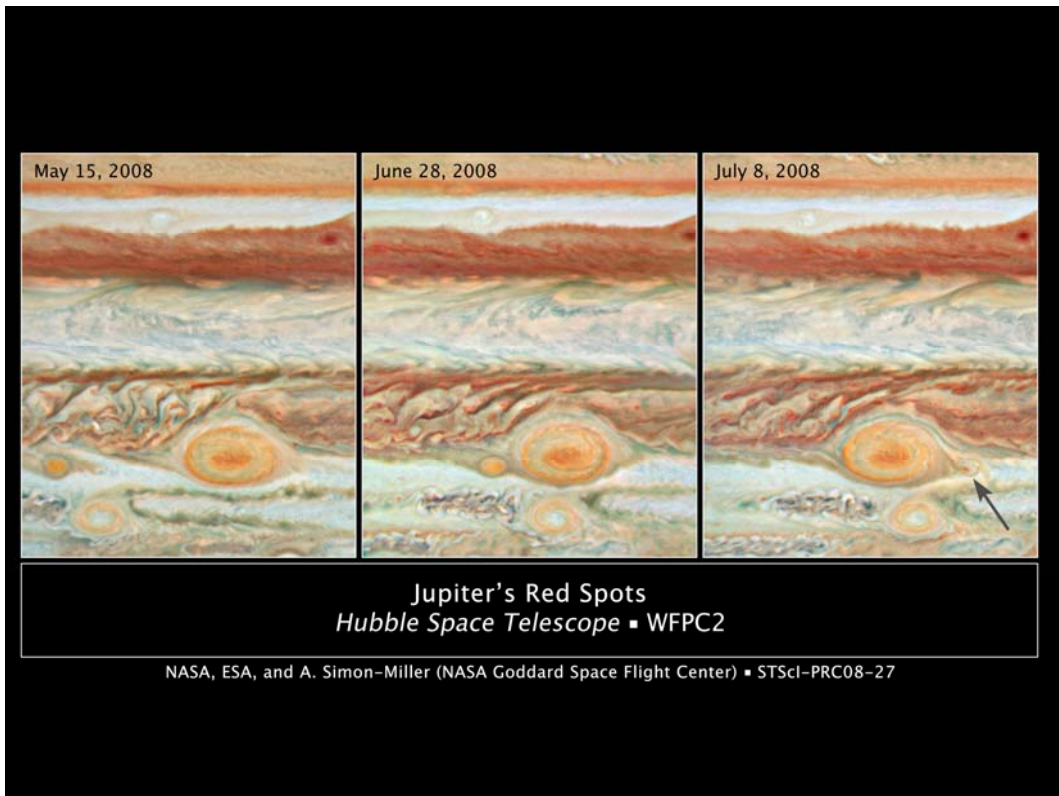
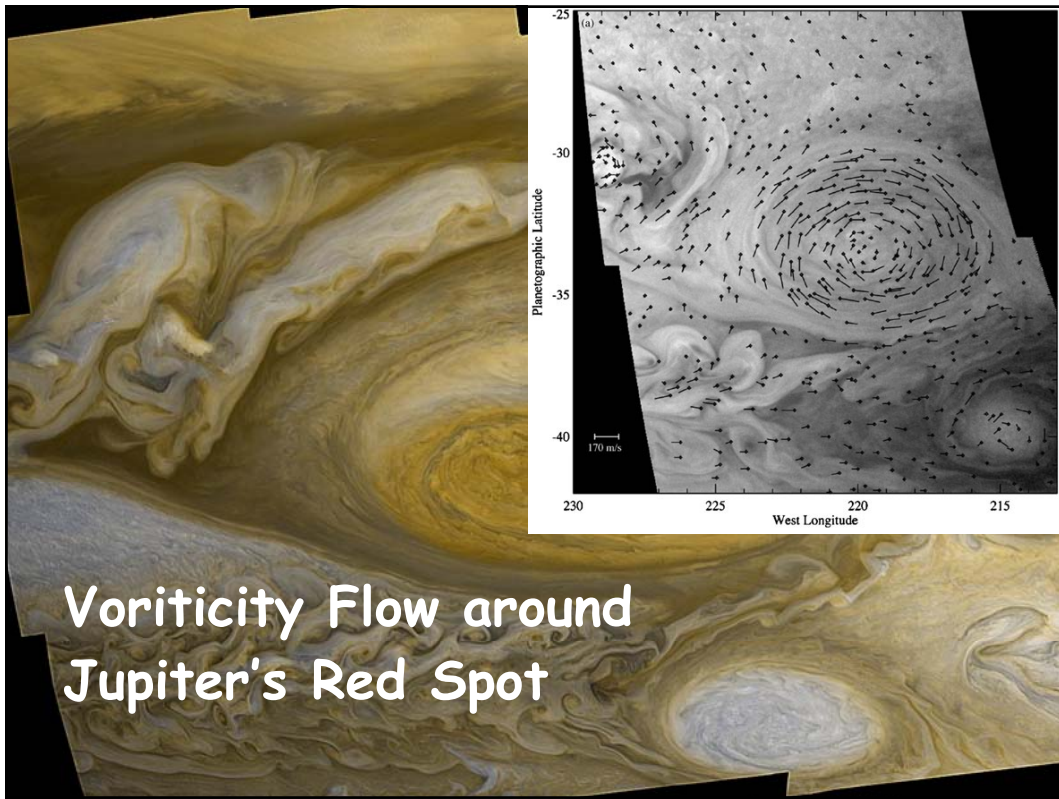




**Hurricanes:
Atmospheric Vortices**



**Vortices and Eddies:
Jupiter's turbulent atmosphere**



Jupiter's Great Red Spot

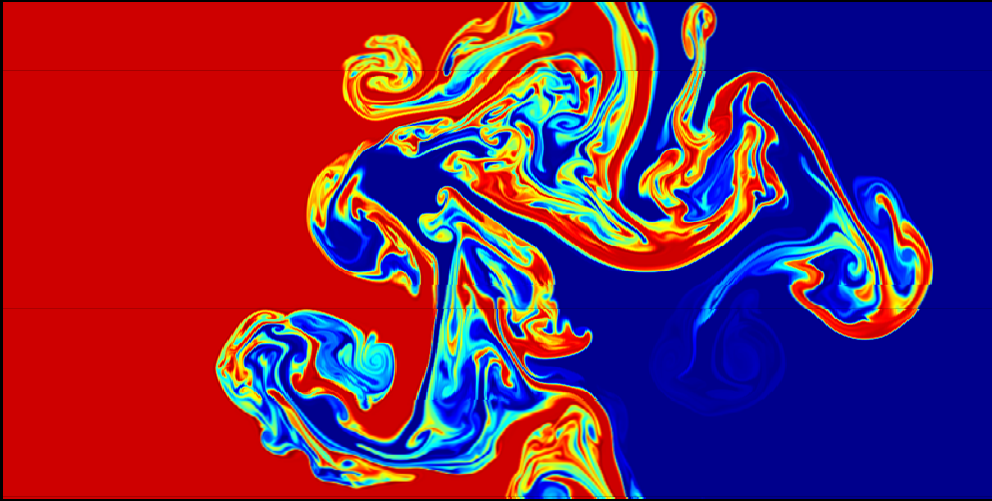


Rayleigh-Taylor Instability



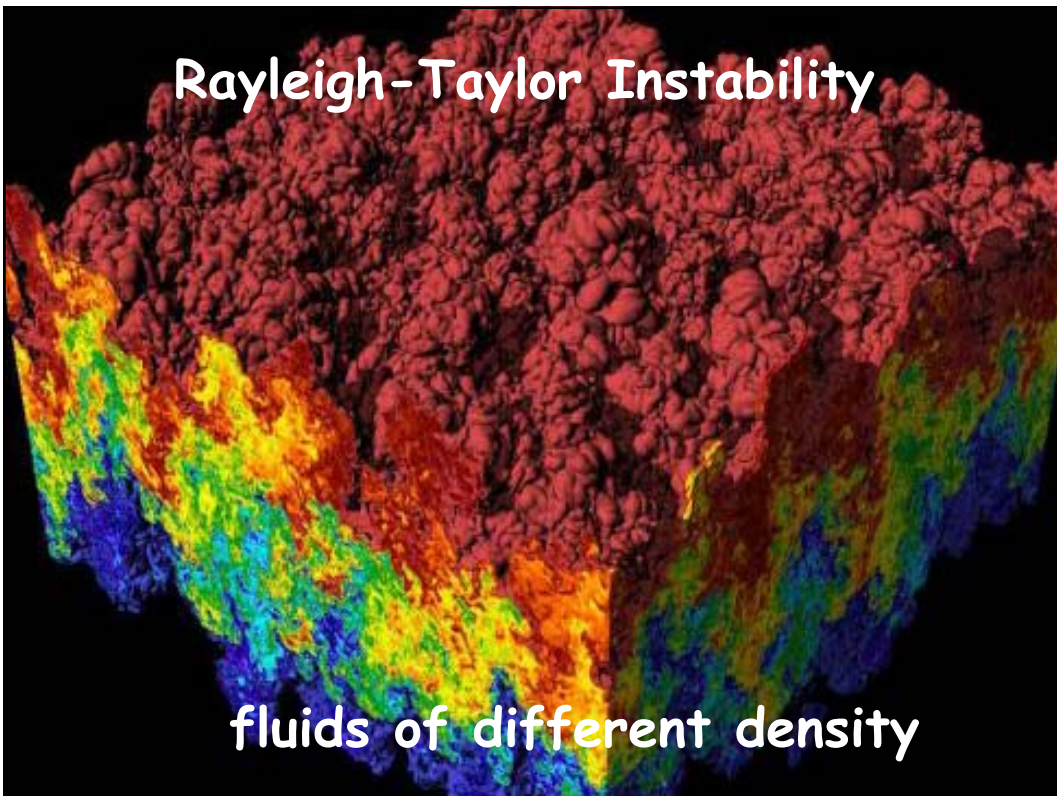
2 fluids of different density

Rayleigh-Taylor Instability



2 fluids of different density

Rayleigh-Taylor Instability



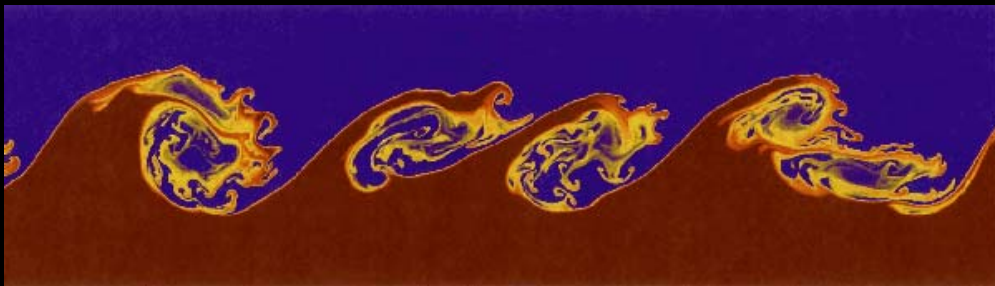
fluids of different density

Cosmic Rayleigh-Taylor Instability



Crab Supernova Remnant

Kelvin-Helmholtz Instability



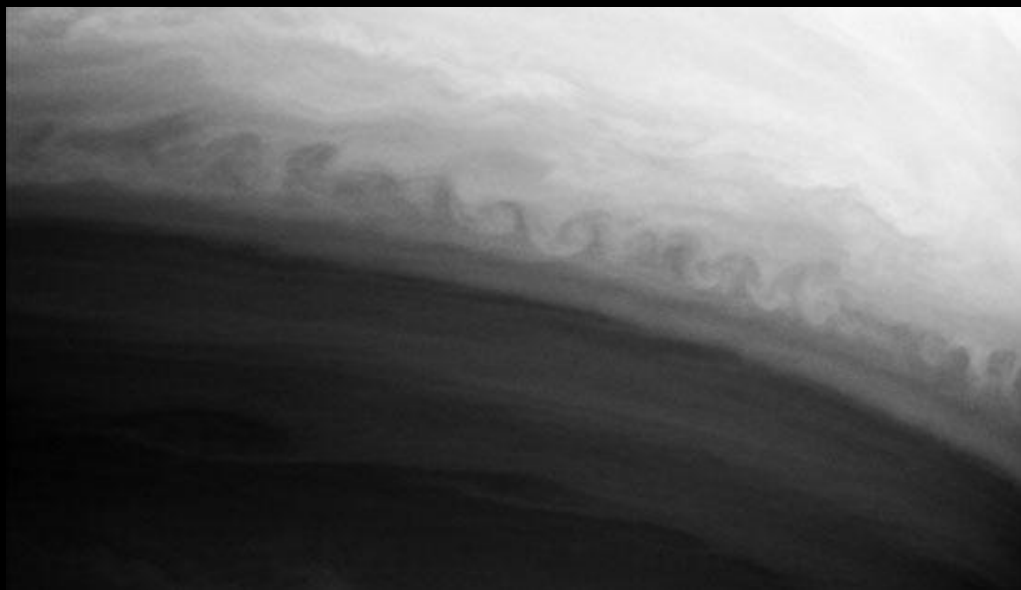
at the boundary of 2 shearing fluids

Kelvin-Helmholtz Instability



KH instability in cloud cover

Kelvin-Helmholtz Instability



KH instability in Saturn's atmosphere

